



CHA 2009 Annual Report

Care for a lifetime...

Volume 4, Issue 4

2009 Community Benefit

A Message from the CHA Board Chair & CEO

Dear Friends and Neighbors,

Community Hospital of Anaconda is very proud to have served the healthcare needs of the Anaconda community since 1889 and we are pleased to share our 2009 Community Benefit Report. This report describes who we are at Community Hospital of Anaconda and our commitment to the Anaconda community and the patients and residents we serve.

As always, CHA is committed to our focus on quality and safety. For the fifth consecutive year, CHA received the prestigious Quality Achievement Award from Mountain-Pacific Quality Health Foundation. This award is testament to our medical providers and our staff and the excellent work they do. Providing excellence in patient care will continue to be our focus in the years to come.

As always, CHA welcomes feedback and suggestions on how to improve the patient care experience.

Thank you for the opportunity to be your partner in the community.

Sincerely,

Bob Francisco,
Board Chairman

John S. McNeece
Chief Executive Officer

CHA Board of Trustees

- Bob Francisco, Chairman
- Lee Ann Bartoletti, Vice Chair
- Bill Finnegan, Sec-Treasurer
- Jack Haffey,
Executive Member at Large
- Gene Vuckovich
- Stan Blaz
- Charlene Galle
- William Reiter, MD, FACP
- Shawna L. Baker, MD, COS
- Peter M. Sorini, MD
- John S. McNeece, CEO
- Honorary Trustee:*
- Steven Lambright

CHA Foundation Board

- Kathie Smith, Chairman
- Cookie Johnson
- Chris Connors
- Susie Krueger
- Jim Morley
- Cenia Huber
- Pat Darnelle
- Cody Thompson
- John Drastal
- Jolynn Orrino
- Donna Volberding
- Melanie Trost

Staff: Meg Hickey-Boynton, Trish Wagner

Annual Report

CHA 2009 Annual Report



**A MIDSUMMER
NIGHT'S DREAM**

CHA Sponsors a Variety of Community Events & Organizations

Each year, Community Hospital of Anaconda sponsors a number of community events and organizations. In 2009, CHA was proud to sponsor of the following events and organizations:

- ☺ Annual Shakespeare in the Park Production
- ☺ Anaconda Relay for Life Event
- ☺ Annual Job Corp Appreciation Picnic
- ☺ Tri County Fair/4-H Livestock Auction
- ☺ Local Kiwanis Group youth programs
- ☺ Wayne Estes Memorial Basketball Tournament
- ☺ Anaconda Chamber of Commerce
- ☺ Anaconda A's Legion Baseball
- ☺ Anaconda Little League
- ☺ Charities through Jeremy
- ☺ Anaconda Booster Club
- ☺ Hearst Free Library
- ☺ Special Olympics

Community Hospital of Anaconda Sponsors Numerous Youth Groups & Activities

In 2009, Community Hospital of Anaconda sponsored ten at-risk children to attend the Grace Camp ministry of Camp Marshall. The children who attend this camp have at least one parent who is currently incarcerated and not actively involved in day-day parenting.

In addition, to the Grace Camp, CHA also sponsors two local youth groups for at-risk youth via monetary donations to support the programs. The Grace Baptist Kidz Club is held weekly and focuses on fostering a healthy, positive environment for our local youth to gather and learn valuable interpersonal skills

as well as biblical teachings. The Crossroads program is administered through our local Episcopal Church and offers after school programs and meals for Anaconda teens. In addition to cash contributions, CHA staff visited the Crossroads program to educate the youth about a variety of topics from financial management to nutrition to interviewing skills.

Each year, CHA contributes \$1,000 to the Anaconda Community Intervention group. Funds are used to support local programs focused on healthy lifestyle choices and for students to attend a summer camp to learn skills re-

lated to leadership, resisting peer pressure and making positive decisions. Annually, CHA also sponsors the local "Chew for Chow" which focuses on tobacco prevention education for the youth of our community. Students desiring to kick the tobacco habit are encouraged to turn in their cans of chew in exchange for a Subway sandwich.

In 2009, funds were also donated to our local art center to provide artistic programs for Anaconda youth. In addition, funding was made available to our local library to assist with a youth summer reading program.

CHA is also committed to supporting our local schools through cash donations and supplies. In 2009, CHA sponsored the chemical free graduation party, barbeques, snacks during testing, the local Booster club; as well as numerous sporting events including regional & divisional tournaments.

FUNDS ARE USED
TO SUPPORT
LOCAL
PROGRAMS
FOCUSED ON
HEALTHY
LIFESTYLE
CHOICES

CHA Montana's Only Baby Friendly Designated Hospital

In 2004, CHA became the first "Baby Friendly Hospital" in the state of Montana, and only the 39th hospital nationally to receive this prestigious designation from the World Health Organization. This designation encourages and recognizes hospitals that offer the optimal level of care for infants, mothers and families. In 2009, CHA was re-certified as a Baby Friendly Hospital. At this time, CHA remained the only hospital in the state to attain this designation.



CHA Hosts 6th Annual Health, Fitness and Wellness Fair

On Saturday, April 25th, Community Hospital of Anaconda hosted its annual health, fitness and wellness fair at the Metcalf Senior Center from 8:00 a.m. – Noon.

For \$35.00, participants were offered a blood screening that included testing for glucose, lipid panel, thyroid stimulating hormone and c-reactive protein. For an additional \$15.00, males were screened for the prostate specific antigen (PSA). Laboratory draws were conducted prior to the fair, with results available for pick-up the day of the fair. CHA staff were available the day of the fair for information on how to interpret results.

Over thirty booths sponsored by Community Hospital of Anaconda and other community agencies offered information regarding health, fitness and wellness. In addition to information on how to interpret results, CHA staff offered free blood pressure screenings, glucose testing, and complimentary health promotion items.

CHA hosts the event annually with a focus on health maintenance, education and prevention. For additional information regarding the annual fair, please contact Tammy Lussy at 563-8686 or Meg Hickey-Boynton at 563-8540.



Fair Participants visit one of the many informational booths

Community Hospital of Anaconda Installs new CT Scanner

Computed Tomography (CT) scans are increasingly valuable tests for a wide range of medical conditions, from trauma to cancer. To help diagnose and treat every patient more quickly and accurately, regardless of condition and circumstance, Community Hospital of Anaconda has installed the SOMATOM Definition AS CT scanner from Siemens Healthcare. This is the first CT scanner that adapts to virtually any patient, provides each person with complete dose protection and offers clinicians improved

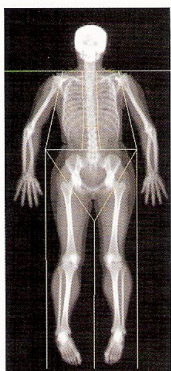
diagnostic information. CHA's new CT provides additional vital information that enables doctors to differentiate, characterize, isolate and distinguish the tissue, making it easier to determine the disease. Using new technology, the Definition AS adapts to each patient's clinical needs and covers the exact range the patient requires, generating images in 4D, while addressing functional imaging such as images of blood flow and entire organs. In the case of a stroke, physicians can use whole-organ imaging to show

not only circulation of blood within a small part of the brain, like most CT scanners, but for all of it.

Although all CT scanners have to use some amount of radiation to create images of the body, the new scanner actively manages radiation dose in 100 percent of spiral examinations, blocking unnecessary doses of radiation. Siemens' Adaptive Dose Shield ensures that only the dose that is clinically relevant to the patient is applied.

CHA CEO Steve McNeece stated, "This equipment gives

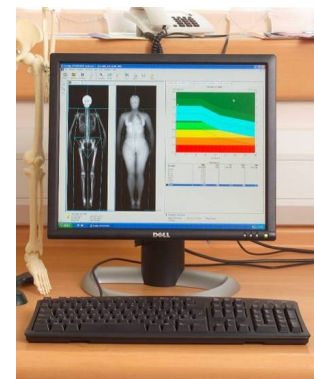
us a level of flexibility for CT scanning that we have never had before, providing the ability for almost any kind of exam. With this equipment, our clinicians can optimize diagnostic quality while minimizing radiation dosing, improving patient care and safety."



Whole Body

CHA Installs new DEXA Scan

(Dual energy x-ray absorptiometry) DEXA Scan is the most commonly used test for measuring bone mineral density. It is one of the most accurate ways to diagnose osteopenia or osteoporosis. DEXA Scans are more accurate than a regular x-ray for diagnosing osteoporosis, require less radiation and are less costly than other tests.



CHA 2009 Annual Report

CHA graduates Nine from Certified Nurse Aide Training Program

Community Hospital of Anaconda CEO Steve McNeece announced the graduation of nine graduates from Community Hospital of Anaconda's first Certified Nurse Aide Training Program.

Community Hospital of Anaconda in conjunction with the Northwest Area Foundation Horizon's Program sponsored the ninety-six hour training program free of charge to successful course applicants. CHA and the Horizon's program sponsored costs of the program including fees for the instructor, books and supplies, childcare and transportation expenses and classroom space. The training program, approved by the State of Montana Department of Public Health and Human Services, consisted of seventy-four hours of classroom instruction and twenty-four hours of clinical rotation. Graduates are now eligible to sit for the Nurse Aide Certification exam and upon certification by the state of Montana, will be offered employment by

Community Hospital of Anaconda. Community Hospital of Anaconda also paid the certification testing fee for applicants wishing to work for CHA upon attaining their Nurse Aide certification.

McNeece stated, "Community Hospital of Anaconda is very pleased we could work with the Horizon's Project to offer this training. This program not only benefits the nine graduates who now have a marketable job skill, it benefits the Anaconda community and the patients and residents we serve. Providing educational opportunities such as this is part of our commitment to ensuring that our staff is well trained on the latest patient care techniques."

Barbara Andreozzi, MSU-Deer Lodge County Extension Agent and coordinator for the Anaconda Horizons projected stated "This is exactly the type

of outcome we've been working toward with our projects. The partnership enables residents to build their careers locally while also addressing a local need. We are committed to provide future opportunities to enable individuals to move from striving to thriving in Anaconda." Barbara also praised the Community Hospital of Anaconda for their continuing efforts to ensure future C.N.A. training in Anaconda.



Statement of Core Values

C-Compassion

We strive to be compassionate toward every person we encounter. We treat the whole person, acknowledging all aspects of healing and well-being.

H-Hospitality

By establishing a friendly and positive environment, we provide *Care for a lifetime*, for families, neighbors and friends.

A-Acknowledgment of a job well done

As a team of care givers, we provide quality health care with a commitment to excellence in all that we do.

Motto: Community Hospital of Anaconda: Care for a Lifetime

Awards and Recognition

Community Hospital of Anaconda Receives Recognition for Providing Quality Health Care at Montana Hospital Association Annual Meeting

Community Hospital of Anaconda CEO Steve McNeece is pleased to announce Community Hospital of Anaconda has received the prestigious 2009 Quality Achievement Award from the Mountain-Pacific Quality Health Foundation. This is the highest award presented by Mountain Pacific and the fifth consecutive year CHA has been recognized for delivering exemplary patient care.

This award recognizes Community Hospital of Anaconda's commitment to con-

tinued performance in providing patients with quality care in the treatment of heart attack, heart failure, pneumonia and preventing surgical infections as determined by the Centers for Medicare.

In 2009, CHA was one of only seven Montana facilities to receive the Quality Achievement Award. McNeece stated, "CHA is committed to providing the highest quality of care to our patients, which requires a great deal of coordination and

teamwork from our nursing and medical staff. Receiving this award for the last five consecutive years demonstrates our team's untiring commitment to our patients and our mission of providing quality health care."



CHA is committed to providing the highest quality of care to our patients, which requires a great deal of coordination and teamwork

CHA Receives Community Trauma Facility Designation

Community Hospital of Anaconda Hospital CEO Steve McNeece is pleased to announce Community Hospital of Anaconda has received designation as a Community Trauma Facility from the Montana Department of Health and Human Services.

This designation comes after CHA met state and federal requirements proving its readiness and training to respond to patients with trauma injuries. CHA spent nearly two years training, updating equipment and creating new procedures intended to improve the recovery chances of trauma patients. Patients are treated by Emergency Medi-

cal Technicians (EMTs) at the scene that are trained in assessment, triage and initial care. The EMTs provide communication to the ER regarding the number and types of injuries. This allows CHA as a receiving hospital, the ability to prepare early for patient arrival by mobilizing personnel and equipment to meet the continuing needs of the trauma patient. The designation means that



CHA has met the standards to receive and treat trauma patients, from initial stabilization to continued care or preparation for transport to another facility.

Dr. Fred Bartoletti, CHA's Emergency Department Director stated that the designation will be

a benefit to the community and the region.

"Trauma is the leading cause of death for all Montanans between the ages of one to

forty-four, outnumbering cancer, heart disease and stroke. As a Community Trauma Facility, CHA can treat many types of trauma locally, allowing patients to receive critical care much faster, improving the chances of recovery."

McNeece echoed Dr. Bartoletti's satisfaction regarding the designation. "We are very excited and proud of the progress we have made and will continue to improve and expand the level of care offered at CHA."

CHA 2009 Annual Report

CHA Becomes First Healthcare Provider in Montana

to Protect Patients with New Endoscope Cleaning Technology

Advanced Sterilization Products (ASP) is pleased to announce that Community Hospital of Anaconda has become the first facility in Montana to adopt a ground-breaking innovation in endoscopy, the EVOTECH™ Endoscope Cleaner and Reprocessor. The EVOTECH System provides automated, consistent cleaning and high-level disinfection of endoscopes, enabling CHA to eliminate manual cleaning processes and reduce the risk of infection during colonoscopies and other endoscopic procedures — bringing peace of mind to patients and staff alike.

Dr. Thomas McMahon of Pintler Surgical Specialists stated, “CHA is very pleased we could institute this innovative sterilization process. Reducing the risk of surgical infections and ensuring qual-

ity care is the cornerstone of our mission.”

The EVOTECH™ System is the first and only commercially available solution to automate the complete endoscope cleaning and reprocessing cycle. By removing the need to manually clean endoscopes, the EVOTECH System eliminates the potential for human variation in the process, which increases the risk of patient infection. Now, patients having an endoscopic procedure at CHA can rest assured that the endoscopes will be consistently clean.

CHA performed approximately 500 endoscopic procedures in 2008. In the U.S., approximately 21 million endoscopic procedures are performed annually in gastrointestinal suites, according

to the Millennium Research Group’s “U.S. Markets for Gastrointestinal Endoscopy Devices 2005” report.

For CHA, the EVOTECH System not only helps to protect patients from infection, but also improves the operational efficiency of the facility. The system’s automation frees up staff to focus on patient care, and its fast reprocessing cycle time of 33 minutes or less ensures the availability of clean endoscopes.

“We are excited to help CHA elevate its standards of endoscopic care, efficiency and patient safety to whole new level through the latest advancements in technology,” said Tammy Hicklin-Estabrook, RN, BSN, MHA, Advanced Sterilization Products Account Executive.

Early Detection is the Key to Treatment and Survival of Colon Cancer

The number three cancer killer of people in Montana is colon cancer. A simple, thirty minute exam known as a colonoscopy can detect the presence of early cancer and pre-cancerous polyps, reducing the number of colorectal cancer deaths. In 2009, Community Hospital of Anaconda CEO Steve McNeece announced the offering of a weekly colonoscopy screening clinic with Board Certified Gastroenterologists, Christoph Woerlein, M.D and Casey Kolendich, M.D..

Community Hospital of Anaconda Chief Medical Officer, William Reiter, MD, FACP, stated “The most important factor to the prevention of colon cancer is screening and removal of early growths called polyps that can turn into cancer over time. Patients can take proactive steps to prevent colon cancer by obtaining colonoscopy screening. Community Hospital of Anaconda has committed to playing a vital role in prevention by of-

fering a weekly clinic with experienced specialists such as Drs. Woerlein and Kolendich.”

Drs. Woerlein and Kolendich perform colonoscopy screening procedures utilizing new state-of-the-art high-performance HDTV imaging. This equipment features unprecedented image quality and enhanced optics, setting a new standard of excellence for screening and treatment. Drs. Woerlein and Kolendich recommend all adults undergo screening beginning at age 50 or earlier, depending upon a person’s risk factors. Screening reduces cancer related death by decreasing incidence and by detecting cancer earlier, at a more treatable stage.

Screening saves lives. If you are aged 50 or older, or, if younger, think you may be at higher than average risk for colorectal cancer, speak with your healthcare provider about getting

screened. People with higher than average risk include but are not limited to those with family history of colon cancer, colon polyps or diseases of the colon including polyposis, ulcerative colitis and Crohn’s Disease. Questions regarding scheduling and referrals may be directed to Pintler General and Thoracic Surgery at 563-8544



Community Hospital and Nursing Home Foundation Your Gifts Help our Community

The foundation was organized in 1996 with the following mission: *To promote, facilitate and direct philanthropic and financial support for Community Hospital and Nursing Home of Anaconda, as it endeavors to meet the health care needs of the persons in this area.* In 2009, over \$28,900 was granted to Community Hospital of Anaconda to assist with equipment purchases, employee education and other projects to enhance the services provided by Community Hospital of Anaconda. One major community service the Foundation supports is our Care-A-Van transpor-

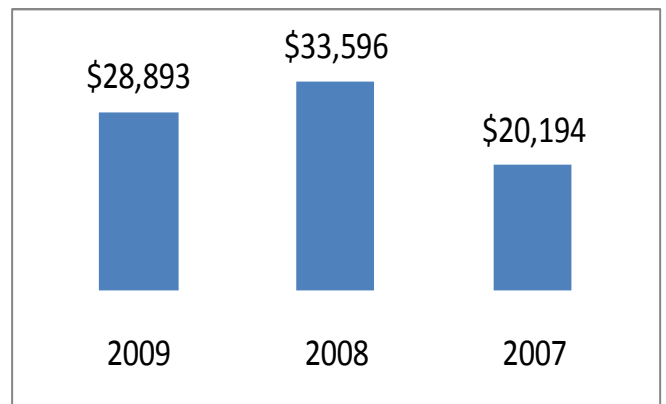
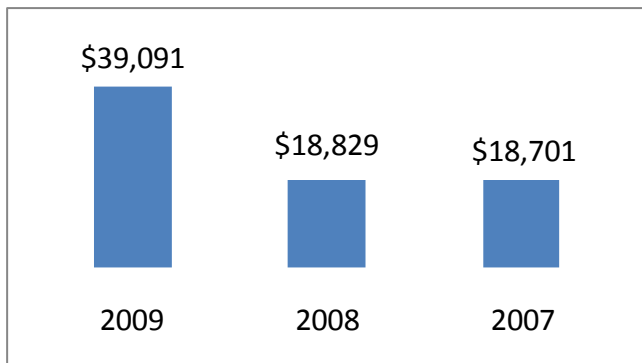
tation system. The Care-A-Van is used to transport residents of our nursing home to and from medical appointments as well as to coordinated outings by our Activities department. In addition, many of our elders who do not have friends or family, have become dependent upon the services of our Care-A-Van to transport them to and from medical appointments or other errands.

In 2009, the Foundation contributed over \$3,500 to the maintenance and upkeep of the 1994 Care-A-Van that has over 180,000 miles on it and is in dire need of re-

placement. Grants and donations are the only way CHA will be able to fund the replacement of this precious community service.

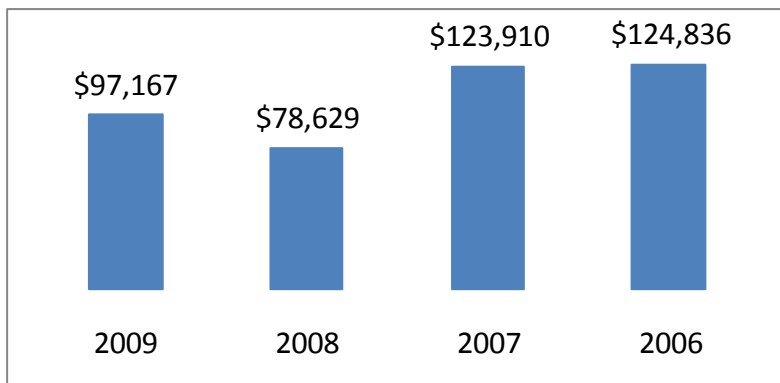
Thank you to everyone who has contributed to the Community Hospital and Nursing Home of Anaconda Foundation. Donors are asked to consider including the Foundation in their will and are encouraged to explore a variety of planned gifts by contacting Meg Hickey-Boynton, Foundation Director. We would not be able to continue our care and service to the Anaconda Community without your invaluable support.

THE FOUNDATION EXISTS TO PROMOTE, FACILITATE & DIRECT PHILANTHROPIC & FINANCIAL SUPPORT FOR COMMUNITY HOSPITAL & NURSING HOME OF ANACONDA, AS IT ENDEAVORS TO MEET THE HEALTH CARE NEEDS OF THE PERSONS IN THIS AREA.



Donations from the Community

Grants to Community Hospital



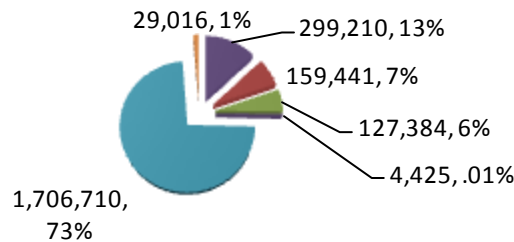
Foundation Endowment Assets

CHA's Community Benefit & Charity Care

Community Benefit and Charity Care

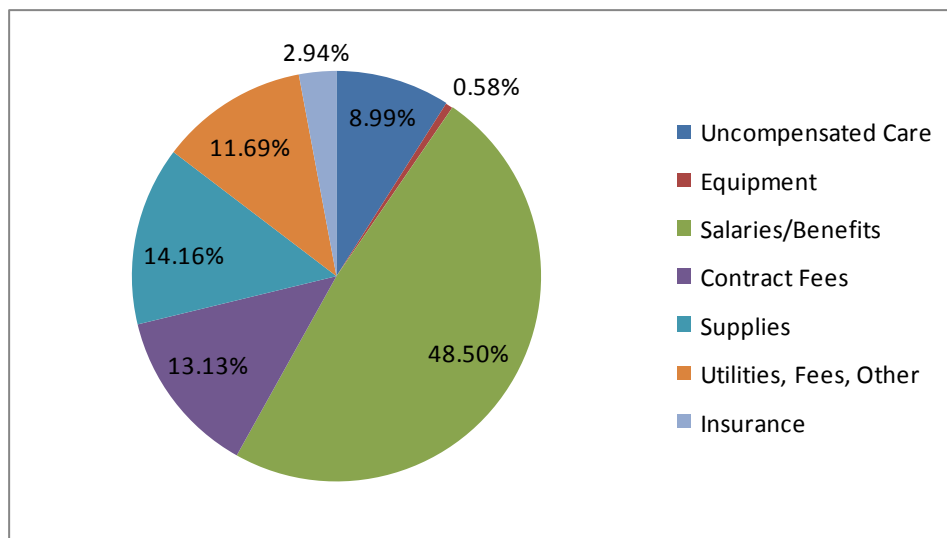
2009 Community Benefit by Percentage

- Free and Discounted Care
- Unfunded Care from Gov't Prog
- Community Health Improvement Services
- Health Prof educ/Community Building/Op
- Subsidized Health Services
- Cash & in-Kind donations



2009 Economic Impact of Community Hospital of Anaconda

2009 Expense Allocation



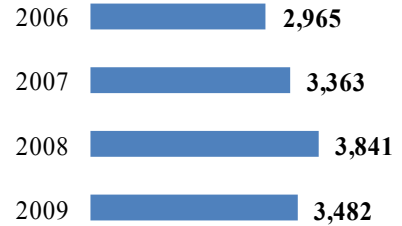
	<u>2009</u>	<u>2008</u>	<u>2007</u>
Salaries & Benefits:	\$12,808,878	\$10,854,948	\$9,797,282
Total Employees:	290	272	245

CHA Income Statement & Statistics

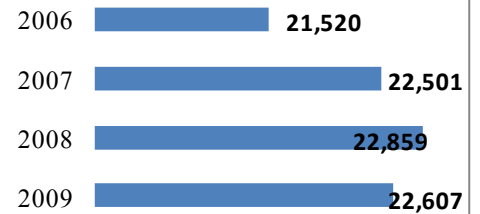
Community Hospital of Anaconda
 Consolidated Statements of Operations and Changes in Net Assets
 Years Ended December 31, 2009 and 2008

	2009	2008
<i>Unrestricted revenues, gains, and other support</i>		
Net patient service revenue	\$ 26,617,043	\$ 23,336,707
Contributions	53,691	298,490
Investment income (loss)	69,145	(110,092)
Other operating revenue	448,908	726,632
Total unrestricted revenues, gains, and other support	27,188,787	24,251,737
<i>Expenses</i>		
Salaries and wages	9,986,509	8,632,248
Employee benefits	2,822,375	2,222,708
Purchased services	3,468,992	2,921,876
Supplies	3,740,947	3,152,567
Repairs and maintenance	511,439	448,930
Leases and rentals	537,831	438,511
Utilities	373,176	405,620
Insurance	776,628	745,721
Interest	257,864	106,026
Bad debts	1,955,817	1,707,894
Depreciation and amortization	693,894	562,702
Other	865,846	962,506
Total expenses	25,991,318	22,307,309
<i>Excess of revenues, gains, and other support over expenses</i>	1,197,469	1,944,428
<i>Other income (expenses)</i>		
Unrealized gain (loss) on investments	242,414	(76,186)
Capital grants	49,516	-
Total other income (expenses)	291,930	(76,186)
<i>Change in unrestricted net assets</i>	1,489,399	1,868,242
<i>Change in temporarily restricted net assets</i>		
Contributions	84,255	529
<i>Change in permanently restricted net assets</i>		
Contributions	-	1,034
<i>Change in net assets</i>	1,573,654	1,869,805
Net assets, beginning of year, restated	10,613,526	8,743,721
Net assets, end of year	\$ 12,187,180	\$ 10,613,526

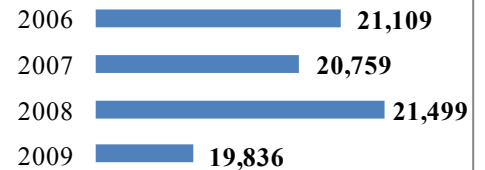
Inpatient Days of Acute Care



Outpatient Visits



Nursing Home Days



Emergency Room/ Convenient Care Visits



Surgeries

